



Catalogue :  
**SERIE 900**

Chapter :  
**NEUTRAL ELEMENTS 900**

Article :  
**EN-905C**

Code:  
**19042377**

| <u>DIMENSIONS AND WEIGHTS</u> |    | <u>Net dimensions</u> | <u>Packed</u>   |
|-------------------------------|----|-----------------------|-----------------|
| Length                        | mm | <b>400,00</b>         | <b>1.022,00</b> |
| Depth                         | mm | <b>930,00</b>         | <b>440,00</b>   |
| Height                        | mm | <b>290,00</b>         | <b>535,00</b>   |
| Weight                        | kg | <b>34,00</b>          | <b>47,00</b>    |
| Volume                        | m3 | <b>0,11</b>           | <b>0,24</b>     |

ELECTRICITY

Not necessary

GAS

Not necessary

WATER

Not necessary

STEAM

Not necessary

AIR

Not necessary

SOUND LEVEL

**< 65,00 db**

INSTALLATION - CONNECTIONS

Ø



DESCRIPTION

NEUTRAL ELEMENT, EN-905 C

Neutral elements are used as a support for the different cooking containers, pans and devices. They are also used as a working top and to prepare the dishes that are to be served.

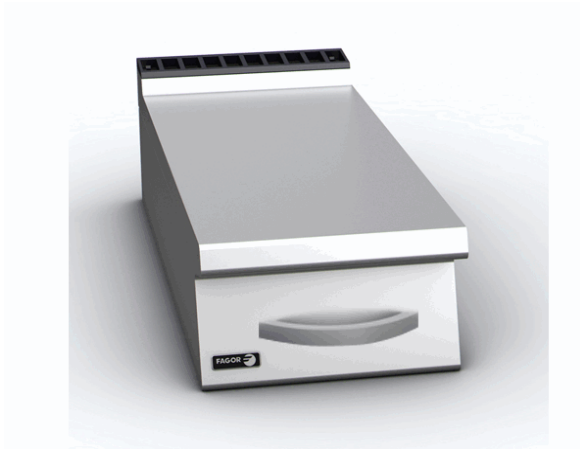
2 mm stainless AISI-304 steel top with rounded edges for easy cleaning. Laser cut and automatic welding for a perfect adjustment of sides between modules with square angle finish.

Element with drawer.

High temperature enamelled cast iron chimney protector

Modules ready to have a filling water inlet or water tap installed at the back.

Dimensions: 400 x 930 x 290 mm.



Catalogue :  
**SERIE 900**

Chapter :  
**NEUTRAL ELEMENTS 900**

Article :  
**EN-905C**

Code :  
**19042377**

---

**SCHEMA - DIMENSIONS**